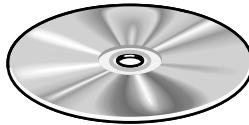


Getting Started with Your IMAQ System

1 Install the NI-IMAQ Software

Insert
CD



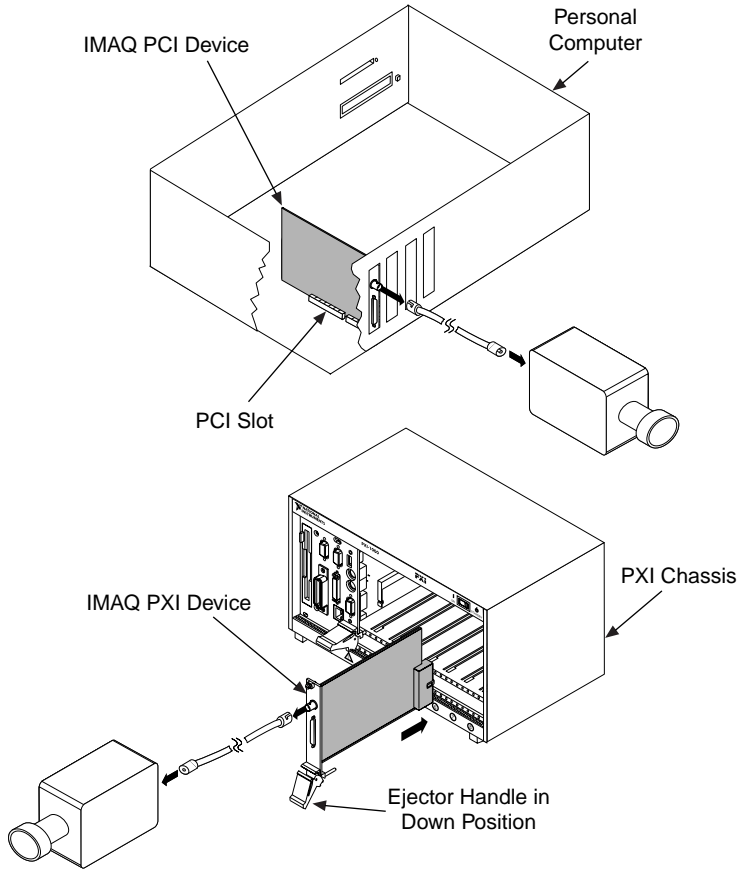
Need more information?
See your IMAQ hardware user manual.

2

Install Your IMAQ Hardware and Connect Your Camera



Caution Turn the power off before installing your hardware.



Note Follow the instructions in your computer documentation to install your IMAQ device.



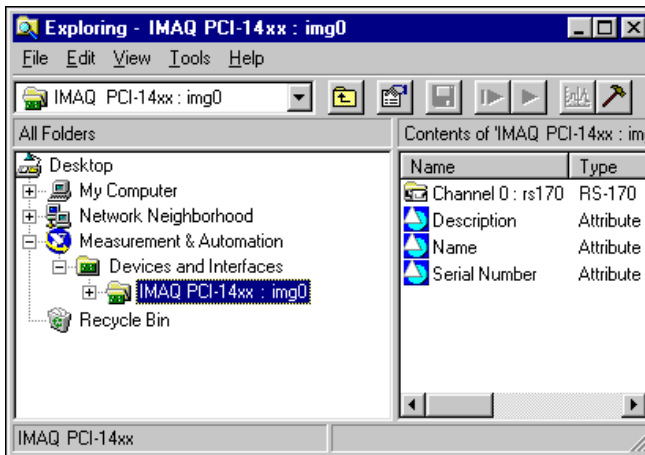
Need more information?
See your IMAQ hardware user manual.

3

Run Measurement & Automation Explorer and the NI-IMAQ Diagnostics



Double-click on the Measurement & Automation icon on your desktop.



Click on the plus sign next to **Devices and Interfaces** to reveal a list of your installed IMAQ devices.



Click once on the IMAQ device you want to test. Click the **Diagnostics** button on the toolbar to open the diagnostics window. Click the **Run Tests** button to run the diagnostics.



Click the **Properties** button on the toolbar if you want to view or modify the interface file.

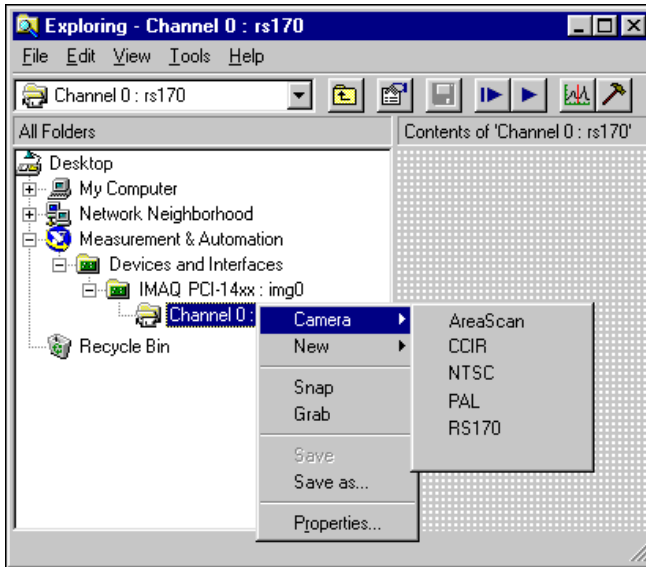


Need more information?

See the Measurement & Automation online help (Help»Help Topics menu item).

4

Select a Camera File and Acquire an Image



Click on the plus sign next to your IMAQ device to list the available channels.

Right-click on the channel to obtain a list of cameras.

Choose the appropriate camera type from the list. Camera type selection varies according to which IMAQ device is installed.



Select the camera and click the **Properties** button on the toolbar if you want to view or modify the camera file.



Click the **Snap** button on the toolbar to acquire your first image.



Need more information?

See the Measurement & Automation online help (Help»Help Topics menu item).

